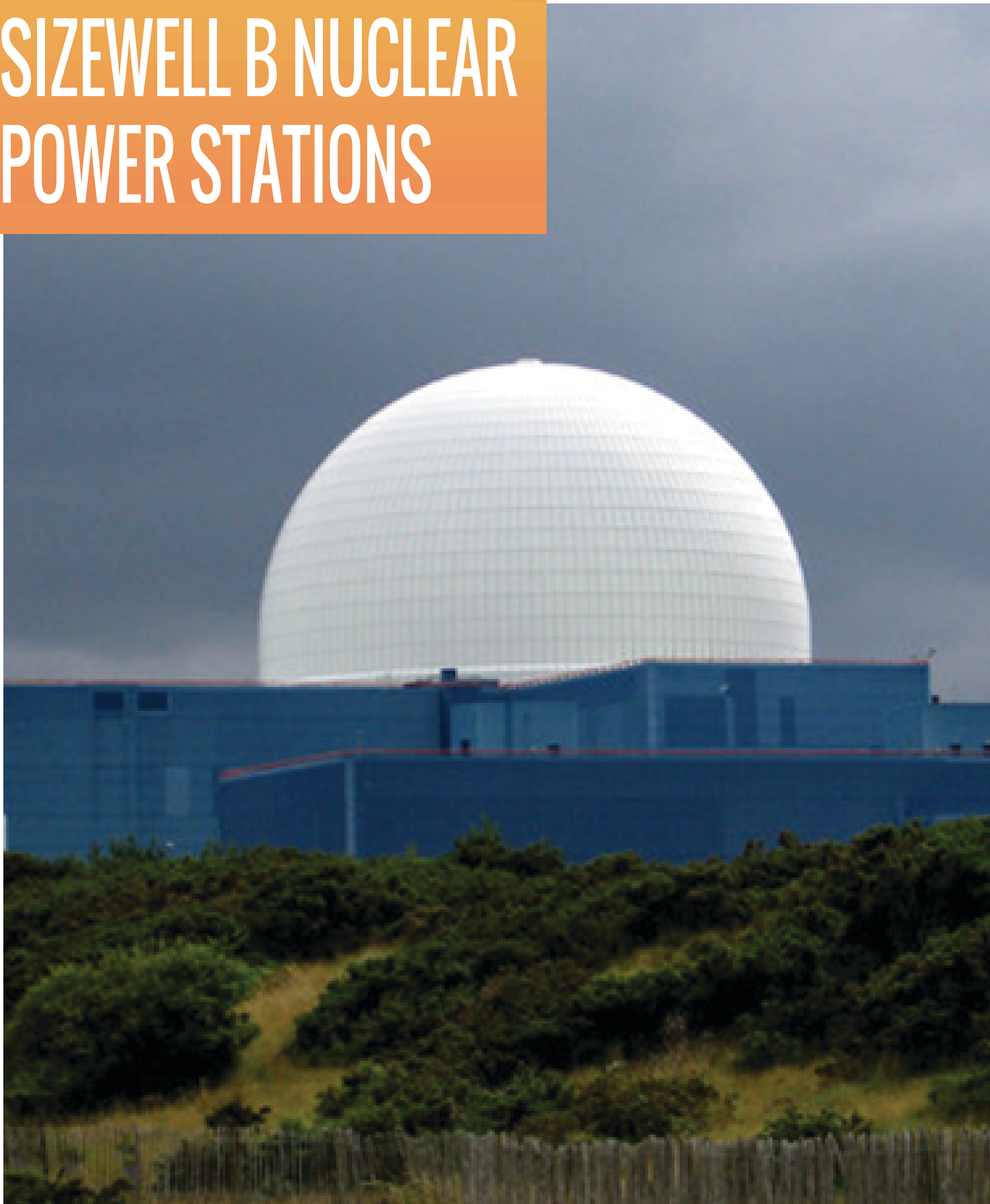


MARINE AGGREGATES IN CONSTRUCTION

SIZEWELL B NUCLEAR POWER STATIONS



BACKGROUND

Sizewell B is the UK's only commercial pressurised water reactor (PWR) power station, with a single reactor. It was built and commissioned between 1987 and 1995, first synchronised with the national grid on 14th February 1995. The main civil engineering contractor was John Laing plc. The power station is operated by EDF Energy.

EDF's strategic target is for a 20 year life extension for Sizewell B PWR, beyond the current accounting closure date of 2035.

CONSTRUCTION NOTES

Marine aggregates were used exclusively in the structural concrete. The raw material (ballast as dredged) was pumped ashore and processed on site for use in structural concrete.

CONSTRUCTION CATEGORY

Structural concrete, visual concrete, pre-stressed concrete

END USE CATEGORY

Built environment, energy

CASE STUDY 3

This case study forms part of a library of case studies demonstrating the successful use of marine aggregates in construction